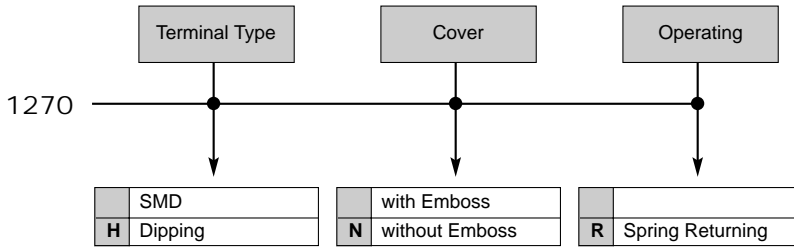


## 1270 series

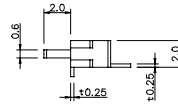
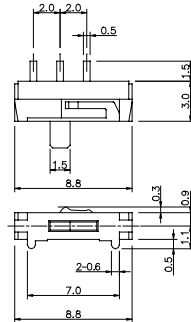
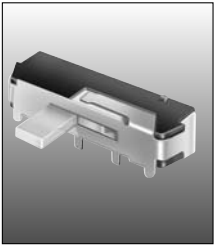
### Specifications

Rating	DC 6V 0.3A
Travel	2mm
Contact Resistance	70mΩ Max.
Operating Life	10,000 Cycles Min.

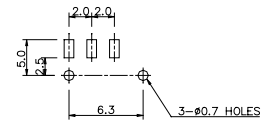
### How to order



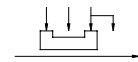
#### 1270



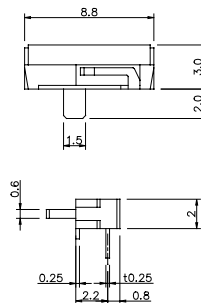
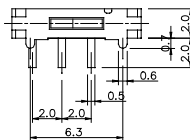
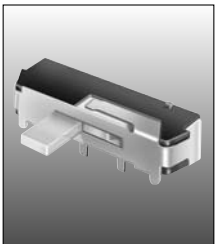
P.C.B. Land Pattern



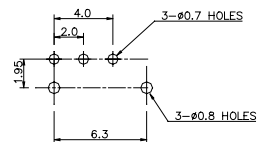
Circuit Diagram



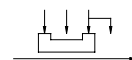
#### 1270H with Embossing Cover 1270HN without Embossing Cover



P.C.B. Land Pattern

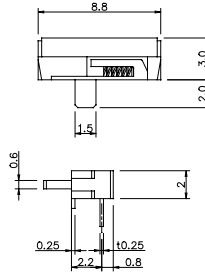
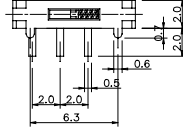
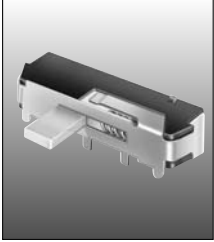


Circuit Diagram

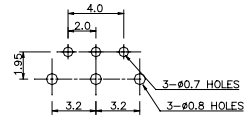


# 1270 series

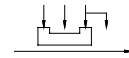
**1270HR** with Embossing Cover  
**1270HNR** without Embossing Cover



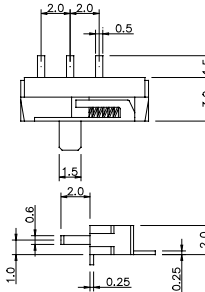
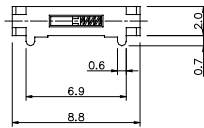
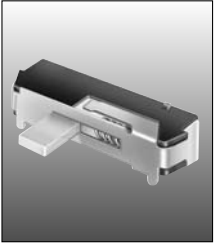
P.C.B. Land Pattern



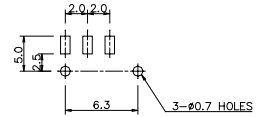
Circuit Diagram



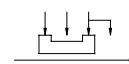
**1270R** with Embossing Cover  
**1270NR** without Embossing Cover



P.C.B. Land Pattern

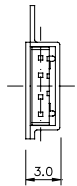
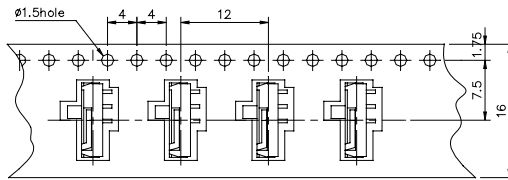
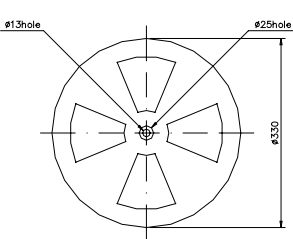


Circuit Diagram



## 1270 Carrier Taping Dimension

Qty / Reel: 1,500pcs

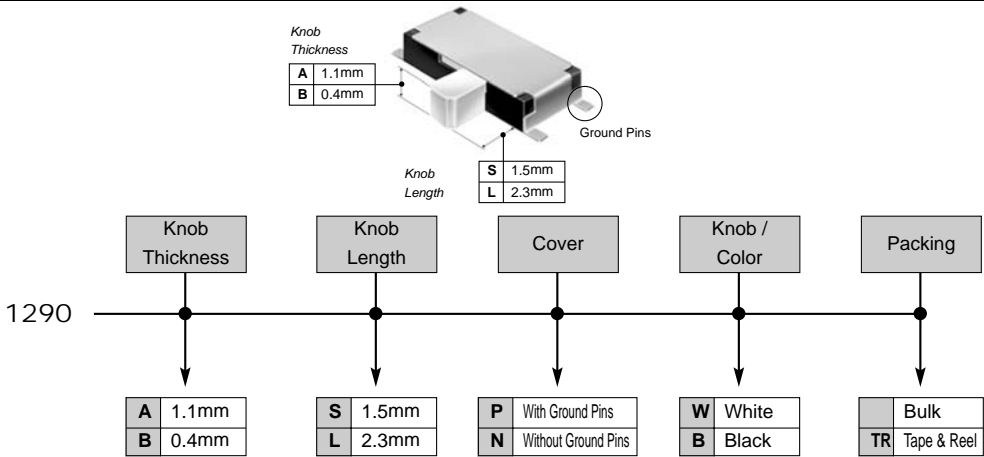


## 1290 series

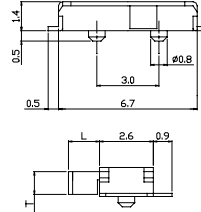
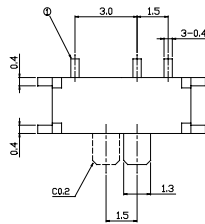
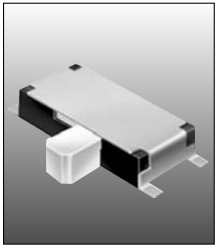
### Specifications

Rating	DC 4V 0.3 A Max.
Operating Force	150 ± 100gf
Circuit	1C-2P
Timing	Non-shorting

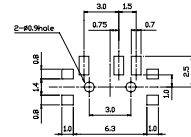
### How to order



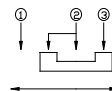
1290



P.C.B. Land Pattern

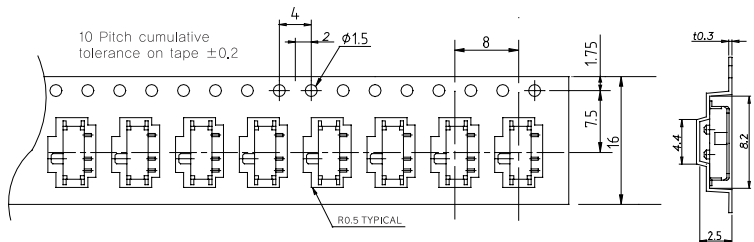
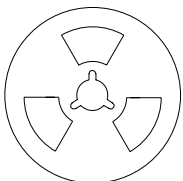


Circuit Diagram



1290 Carrier Taping Dimension

Qty / Reel: 3,000pcs

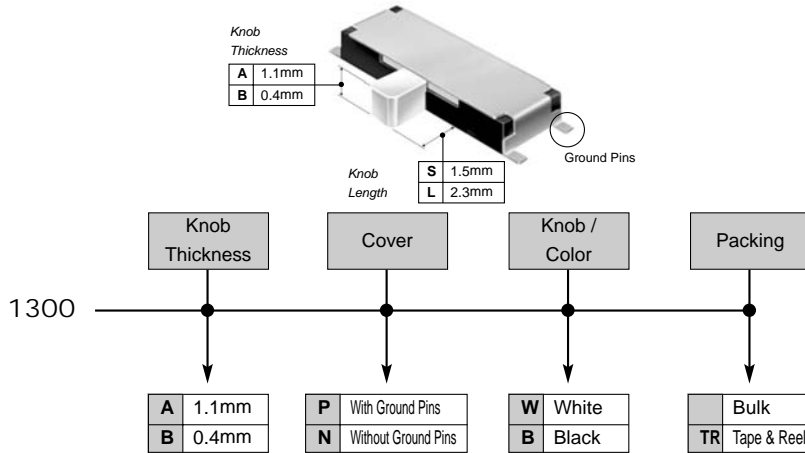


# 1300 series

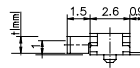
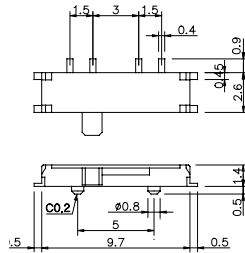
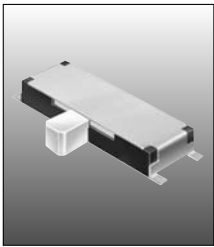
## Specifications

Rating	DC 12V 50mA
Travel	0.25±0.1mm
Contact Resistance	100mΩ Max.
Operating Life	100,000 Cycles Min.

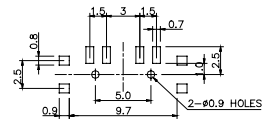
## How to order



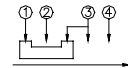
## 1300



P.C.B. Land Pattern

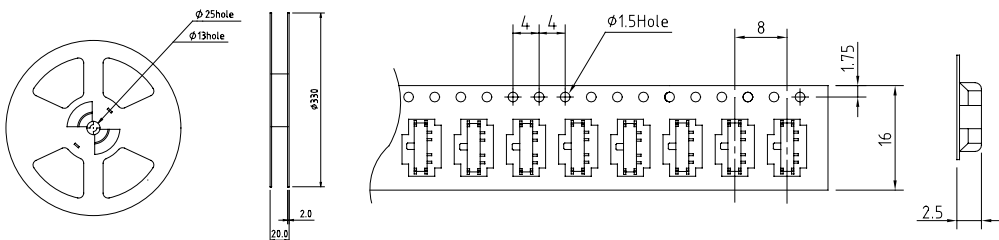


Circuit Diagram



## 1300 Carrier Taping Dimension

Qty / Reel: 3,000pcs

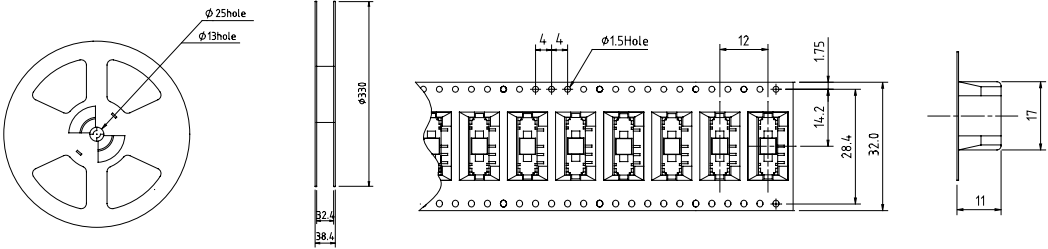




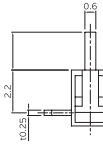
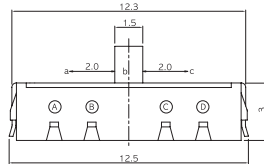
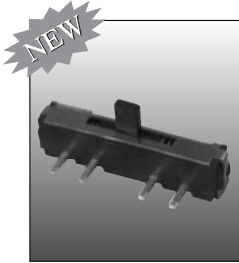
# 1311 series

## 1311 Carrier Taping Dimension

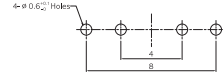
Qty / Reel: 500pcs



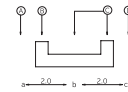
## 1312



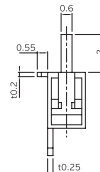
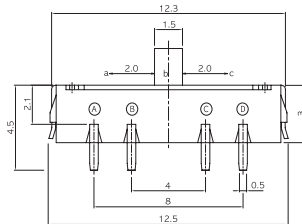
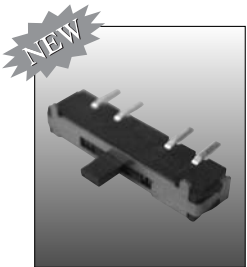
P.C.B. Land Pattern



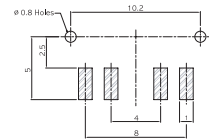
Circuit Diagram



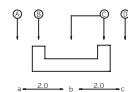
## 1312S



P.C.B. Land Pattern



Circuit Diagram

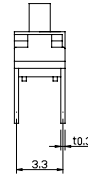
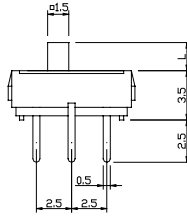
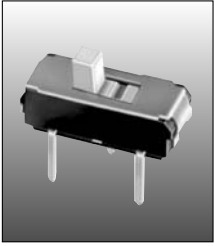


## 2235 series

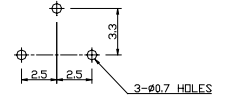
### Specifications

Rating	DC 6V 0.3A Max.
Travel	2mm
Operating Force	200 ± 100gf
Circuit	2C - 2P or 1C - 2P
Timing	Non - shorting

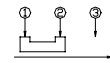
**1235** 2mm(L)  
**1235A** 4mm(L)



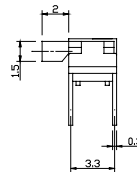
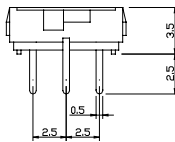
P.C.B. Land Pattern



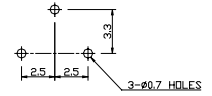
Circuit Diagram



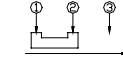
**1245** 2mm(L)  
**1245A** 4mm(L)



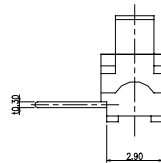
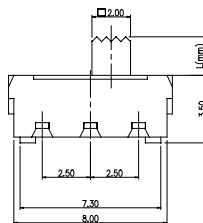
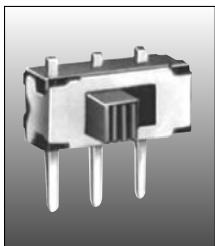
P.C.B. Land Pattern



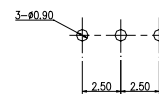
Circuit Diagram



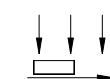
**1260** 2mm(L)  
**1260B** 4mm(L)



P.C.B. Land Pattern

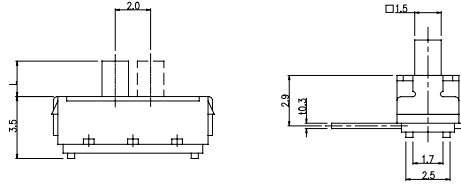
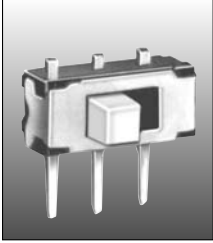


Circuit Diagram

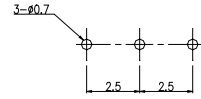


# 2235 series

1260N 2mm(L)  
1260NA 4mm(L)



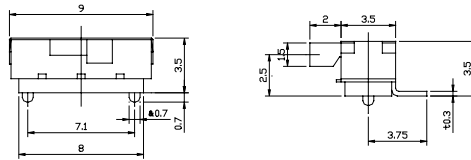
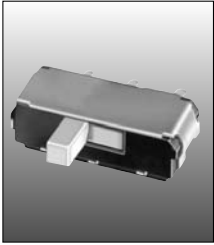
P.C.B. Land Pattern



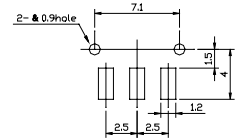
Circuit Diagram



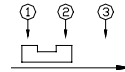
1280 2mm(L)  
1280A 4mm(L)



P.C.B. Land Pattern

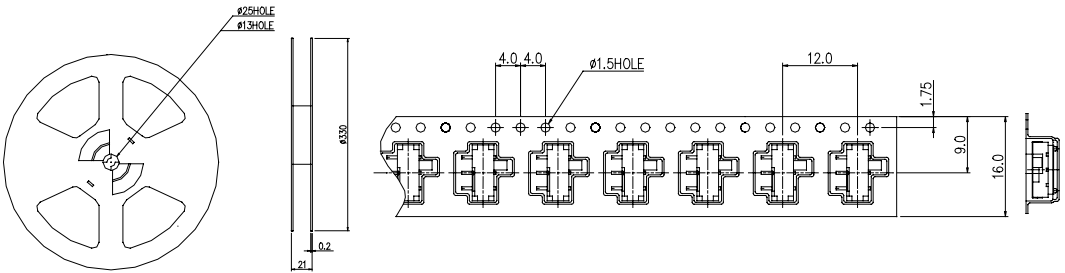


Circuit Diagram

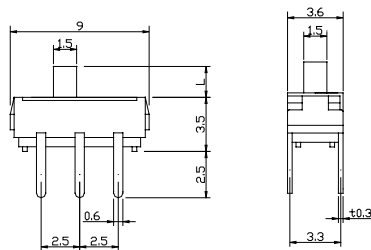
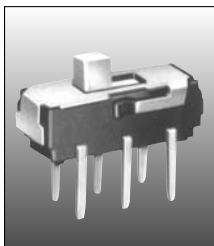


## 1280 Carrier Taping Dimension

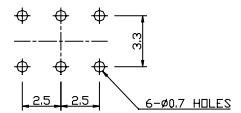
Qty / Reel: 1,000pcs



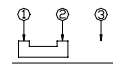
2235 2mm(L)  
2235A 4mm(L)



P.C.B. Land Pattern



Circuit Diagram

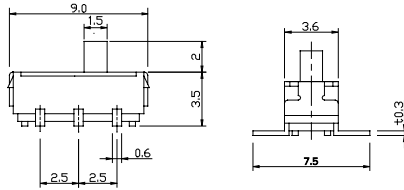
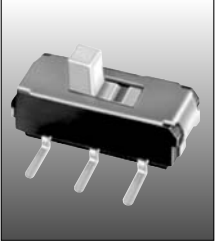




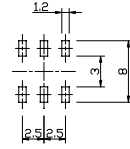
# SLIDE SWITCHES

## 2235 series

2235S 2mm(L)  
2235SA 4mm(L)



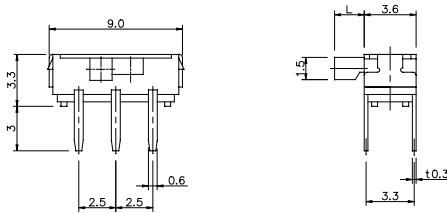
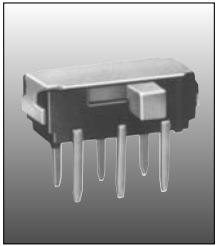
P.C.B. Land Pattern



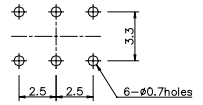
Circuit Diagram



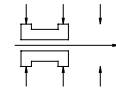
2245 2mm(L)  
2245A 4mm(L)



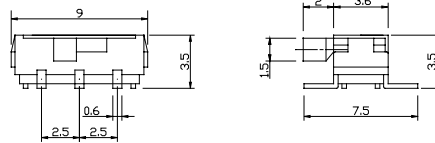
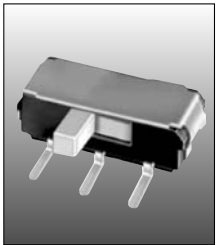
P.C.B. Land Pattern



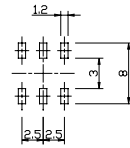
Circuit Diagram



2245S 2mm(L)  
2245SA 4mm(L)



P.C.B. Land Pattern

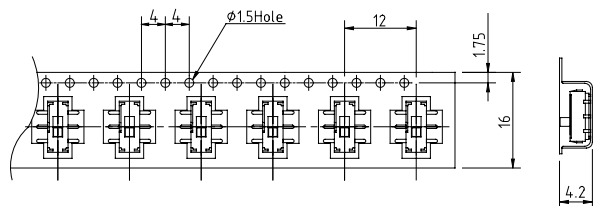
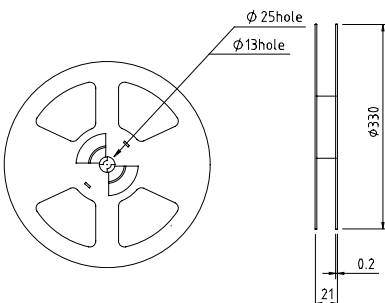


Circuit Diagram



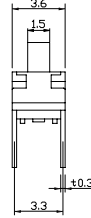
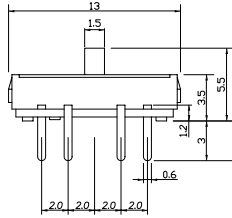
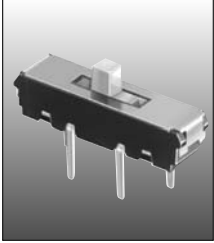
2235, 2245 Carrier Taping Dimension

Qty / Reel: 500pcs

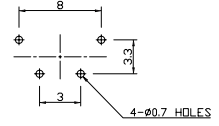


# 1336 series

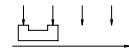
1336



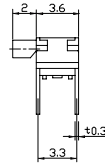
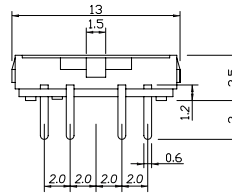
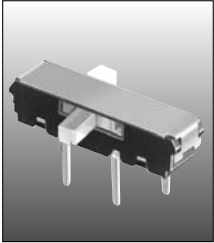
P.C.B. Land Pattern



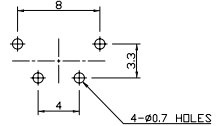
Circuit Diagram



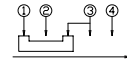
1346



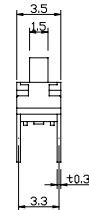
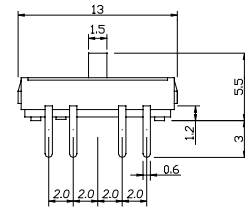
P.C.B. Land Pattern



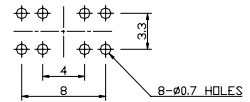
Circuit Diagram



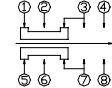
2336



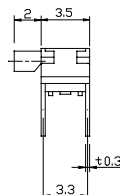
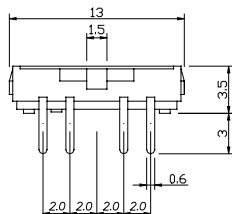
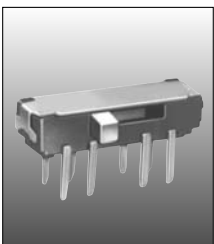
P.C.B. Land Pattern



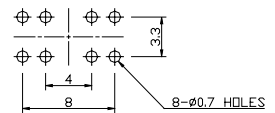
Circuit Diagram



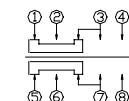
2346



P.C.B. Land Pattern



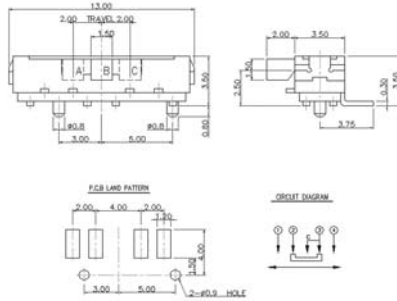
Circuit Diagram



# SLIDE SWITCHES

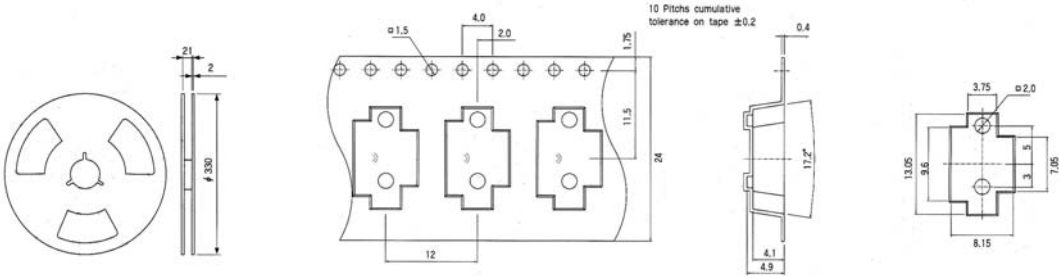
## 1380 series

### 1380

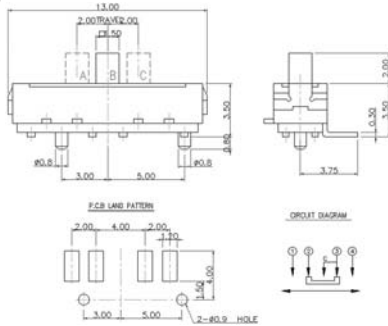


1. Rating : DC 6V 0.3mA
2. Circuit : 1C-3P
3. TIMING : NON-Shorting
4. Travel : 2+2mm
5. Operating Force : a->b, c->b:  $120 \pm 100gf$   
b->a, b->c:  $250 \pm 100gf$
6. Operating Life : 10,000 Cycles

### 1380 Carrier Taping Dimension ( 1REEL/1,200PCS )

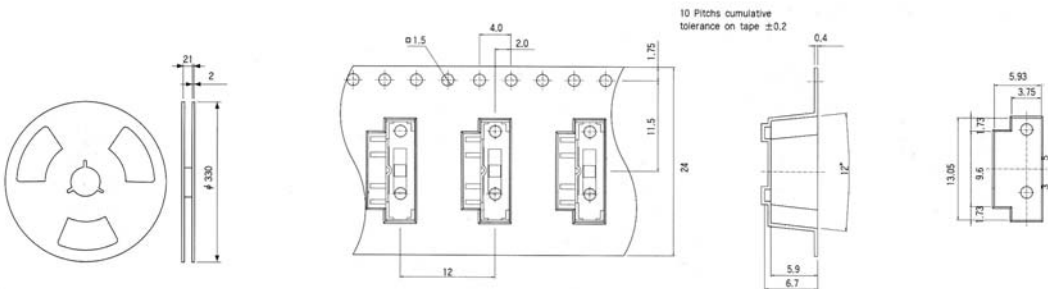


### 1380T



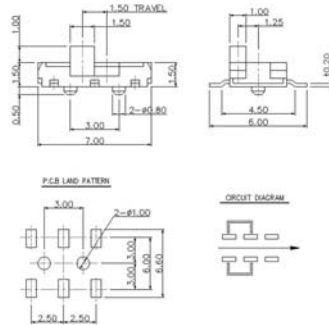
1. Rating : DC 6V 0.3mA
2. Circuit : 1C-3P
3. TIMING : NON-Shorting
4. Travel : 2+2mm
5. Operating Force : a->b, c->b:  $120 \pm 100gf$   
b->a, b->c:  $250 \pm 100gf$
6. Operating Life : 10,000 Cycles

### 1380T Carrier Taping Dimension ( 1REEL/800PCS )



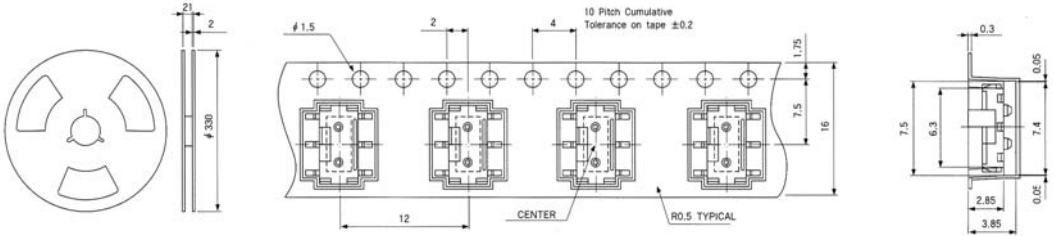
# 1390/1400 series

## 1390

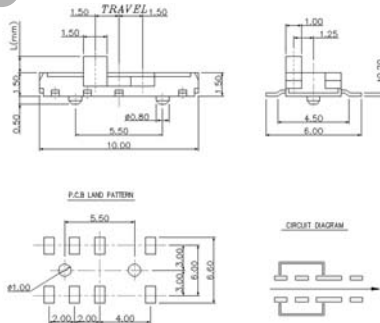


1. Rating : DC 4V 0.3A
2. Circuit : 2C-2P
3. TIMING : NON\_SHORTING
4. Travel : 1.5+1.5
5. Operating Force :  $200 \pm 150\text{gf}$
6. Operating Life : 10,000 Cycles

## 1390 Carrier Taping Dimension ( 1REEL/1,200PCS )

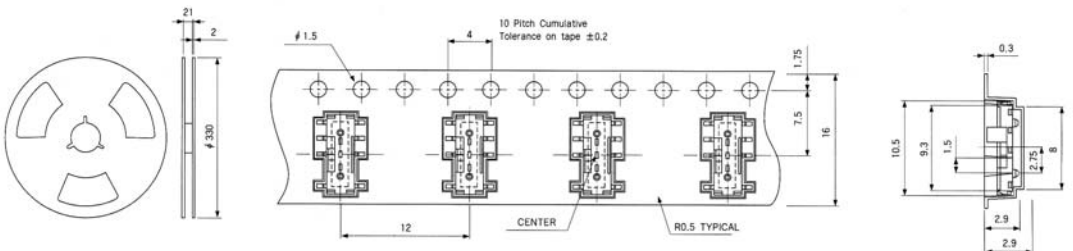


## 1400



1. Rating : DC 4V 0.3A
2. Circuit : 2P-3P
3. TIMING : NON\_SHORTING
4. Travel : 1.5+1.5
5. Operating Force : a->b,c->b:  $200 \pm 150\text{gf}$   
b->a,b->c:  $200 \pm 150\text{gf}$
6. Operating Life : 10,000 Cycles

## 1380 Carrier Taping Dimension ( 1REEL/1,200PCS )

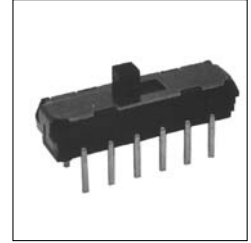


# SLIDE SWITCHES

## SL3 series

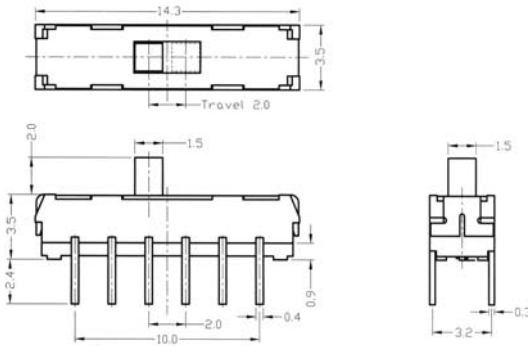
### Specifications

Rating	0.3mA,6VDC
Contact Resistance	70mΩ Max
Operating Temperature	- 25°C~+ 70°C
Life	10,000 Cycles
Operating Force	200±50gf
Insulation Resistance	500VDC, 100MΩ Min
Withstand Voltage	500VAC 1 minute.
Travel	2.0±0.3mm
Circuit	4 Pole 2 Throw.

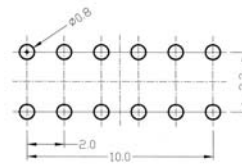


### Dimension

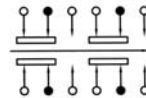
Order Number:SL3-15S



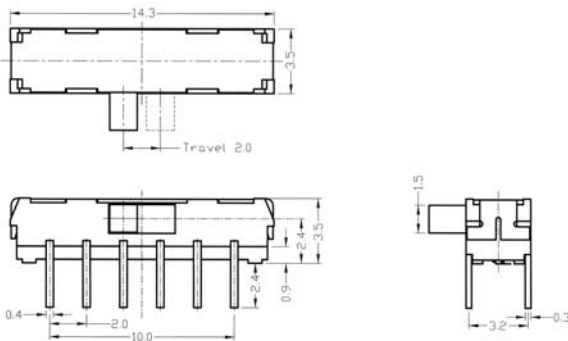
P.C.B. Land Pattern



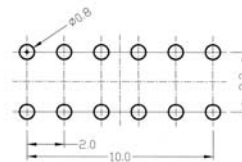
Circuit Diagram



Order Number:SL3-15L



P.C.B. Land Pattern



Circuit Diagram

